

## 4.2 Interface Connection

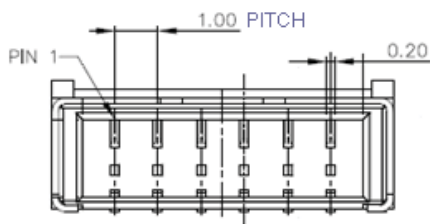
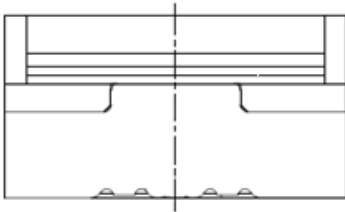
[lcdparts.net](http://lcdparts.net) | [store.lcdparts.net](http://store.lcdparts.net)

### 4.2.1 Connector Type

Backlight Connector	Manufacturer	ENTERY
	Part Number	3707K-S06N-21R
Mating Connector	Manufacturer	ENTERY
	Part Number	H112K-P06N-13B (Locking type)

### Backlight Connector dimension:

$H \times V \times D = 13.9 \times 3.00 \times 4.25$ ,  $Pitch = 1.0$ (unit = mm)



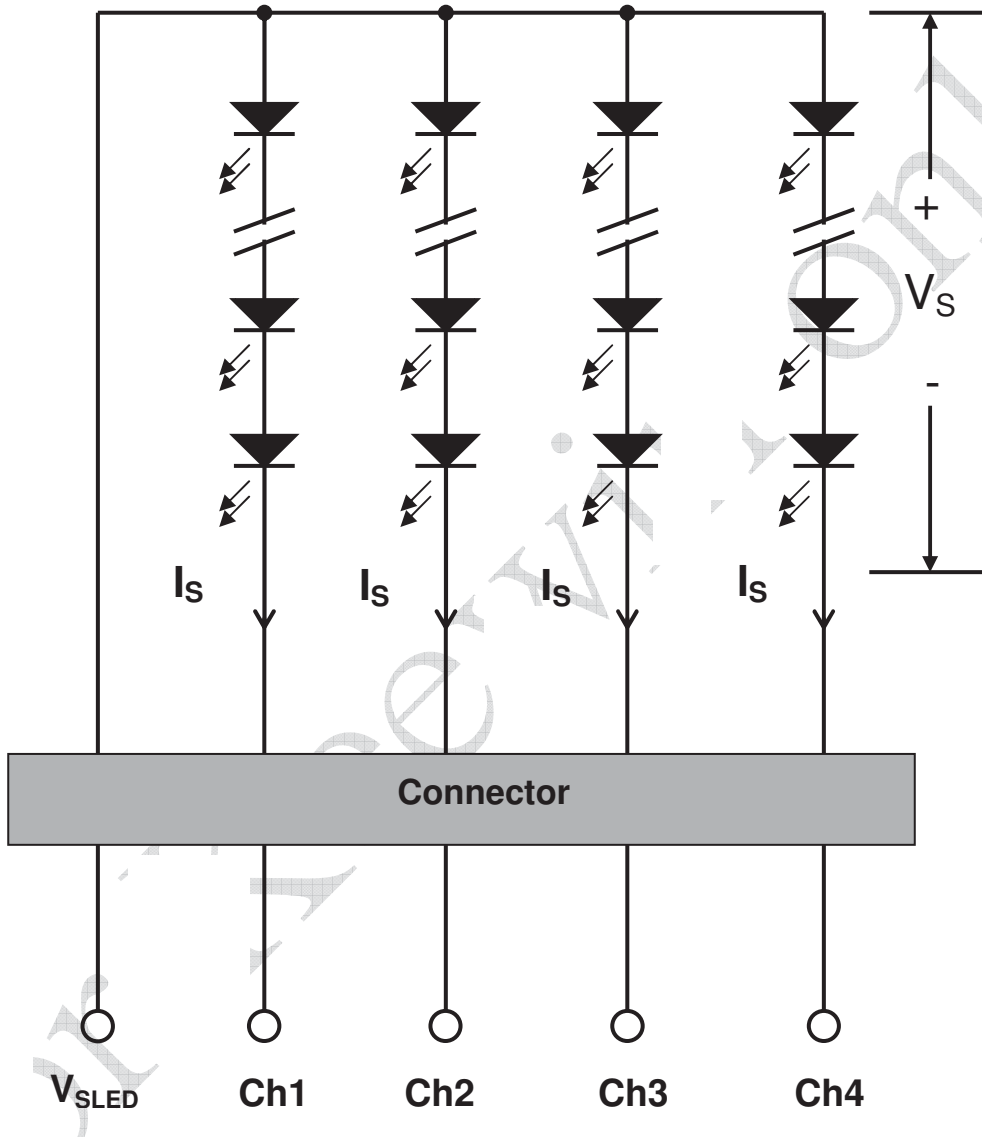
[lcdparts.net](http://lcdparts.net) | [store.lcdparts.net](http://store.lcdparts.net)

4 Backlight Unit

lcdparts.net | store lcdparts.net

4.1 Block Diagram

The following shows the block diagram of the 17 inch Backlight Unit. And it includes 36 pcs LED in the LED light bar. (4 strings and 9 pcs LED of one string).



lcdparts.net | store lcdparts.net