

SPECIFICATION:

[MoniServ, Inc. | http://store.lcdparts.net/](http://store.lcdparts.net/) | <http://lcdparts.net/> | <https://lcdpart.com>

1600 Noriega Street | San Francisco | CA 94122 | 1-415-682-8685

MS615-V0	Dimension: 125MM(L)X30MM(W)X16MM(H)
----------	-------------------------------------

MS615UB is designed to drive our LSR, SB and UB series LED upgrade kits for LCD screens size between 15" to 32". MS615UB is also compatible with LCD screens that originally equipped with its manufacturer's LED strip. MS615UB can drive LED strips up to 55V DC (40 Watt).

Default Pin Assignment: (Shorted J2, Shorted J3)

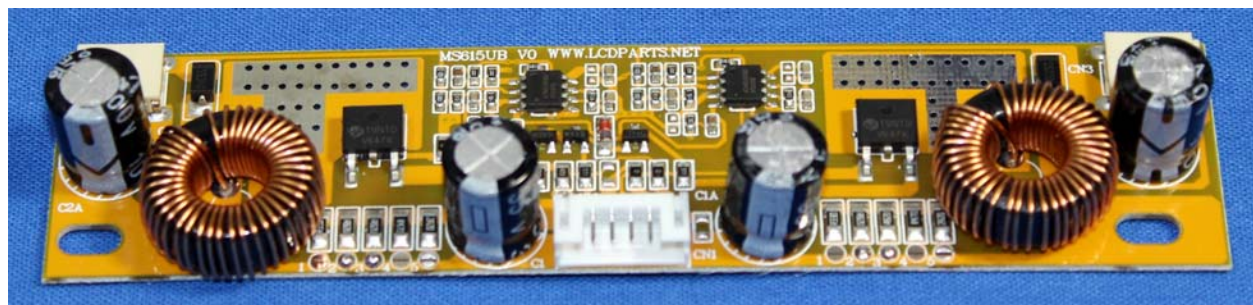
PIN NO	SYMBOL	DESCRIPTION
1,2	VIN	POWER SUPPLY: 12-24V DC*
6	ENA	ENABLED & DISABLED CONTROL: 3.0V ON
4	ADJ	BRIGHTNESS CONTROL: 0-3.5V, 0V=MAX.
3,5	GND	POWER SUPPLY GROUND, P3=NC

Optional Pin Assignment: (Shorted J1 and Shorted J4)

PIN NO	SYMBOL	DESCRIPTION
1,2	VIN	POWER SUPPLY: 12-24V DC *
3	ENA	ENABLED & DISABLED CONTROL: 3.0V ON
4	ADJ	BRIGHTNESS CONTROL: 0-3.5V, 0V=MAX.
5,6	GND	POWER SUPPLY GROUND, P6=NC

Output Pin Assignment:
CN2 and CN3

PIN	SYMBOL	FUNCTION
1	Red	POWER SUPPLY OUTPUT
2	LV	POWER SUPPLY GROUND



[MoniServ, Inc. | http://store.lcdparts.net/](http://store.lcdparts.net/) | <http://lcdparts.net/> | <https://lcdpart.com>

1600 Noriega Street | San Francisco | CA 94122 | 1-415-682-8685

SPECIFICATION:

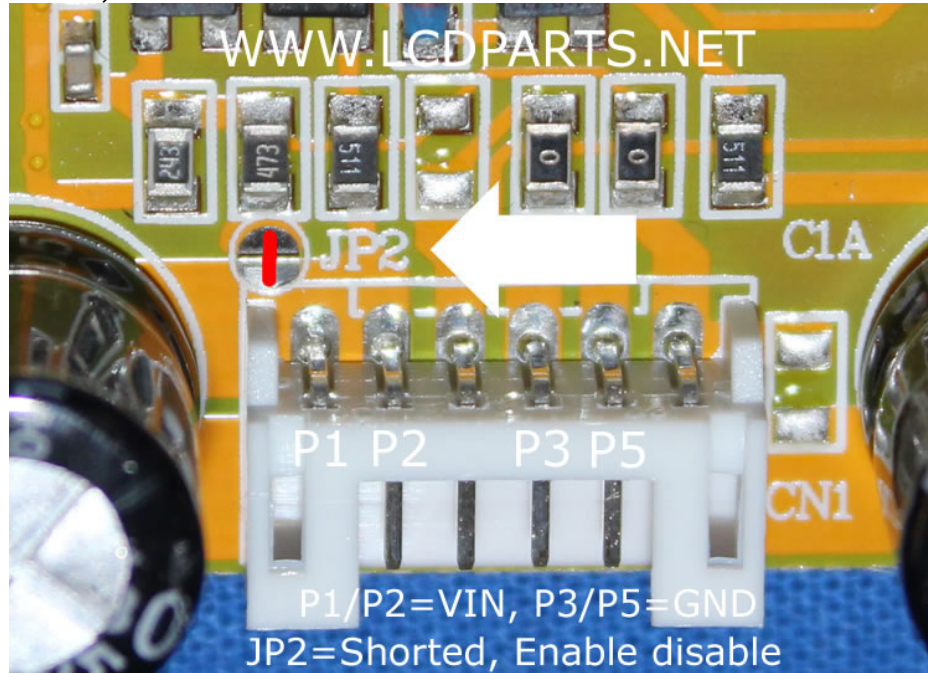
[MoniServ, Inc. | http://store.lcdparts.net/](http://store.lcdparts.net/) | <http://lcdparts.net/> | <https://lcdpart.com>

1600 Noriega Street | San Francisco | CA 94122 | 1-415-682-8685

MS615-V0	Dimension: 125MM(L)X30MM(W)X16MM(H)
----------	-------------------------------------

How to Disable Enable

Shorted JP2. That's it! Then just apply DC voltage to VIN (Positive) and negative to GND (power Ground).



There is a 6 pin connectors on MS615UB (CN1). Pin outs are available on solder side. Pin1/Pin2=VIN (+12V ~ 24V DC). P3/P5=GND (Power Ground). P4=ADJ (Brightness adjustment, N/C no connection), P6=ENA (On/Off). You will find all these DC voltage from your existing inverter wire harness and apply to MS615UB

Jumper setting:

LED Part Number	Jumper Setting
UB70345LCD4221X2	Shorted=2,3
UB70395LED4821X2	Shorted=4
UB60420LED5020X2	Shorted=3,5
UB60485LED5620X2	Shorted=2,3
UB100370LED4530X2	Shorted=3,5

[MoniServ, Inc. | http://store.lcdparts.net/](http://store.lcdparts.net/) | <http://lcdparts.net/> | <https://lcdpart.com>

1600 Noriega Street | San Francisco | CA 94122 | 1-415-682-8685