

SPECIFICATION:

[MoniServ, Inc. | http://store.lcdparts.net/](http://store.lcdparts.net/) | <http://lcdparts.net/> | <https://lcdpart.com>

1600 Noriega Street | San Francisco | CA 94122 | 1-415-682-8685

MS610UB-V2	Dimension: 80mm (3.15") X 20mm (0.79" X 6.60mm (0.26")
------------	--

MS610UB-V2 is designed to drive our LSR, SB and UB series LED upgrade kits for 12.1 inch or smaller LCD screens. MS610UB is also compatible with LCD screens that originally equipped with its manufacturer's LED strip. MS610UB-V2 can drive LED strips up to 80V DC (10W). Its compact design allows it to be mounted anywhere.

Input connector pin assignments:

CN1 and CN3

CN1	SYMBOL	DESCRIPTION
1,2	VIN	POWER SUPPLY: 10V to 24V DC
3	ENA	ENABLED & DISABLED CONTROL: 3.0V ON
4	ADJ	BRIGHTNESS CONTROL: 0V=MAX.
5,6	GND	POWER SUPPLY GROUND
CN3	SYMBOL	DESCRIPTION
1,2	VIN	POWER SUPPLY: 10V to 24V DC
6	ENA	ENABLED & DISABLED CONTROL: 3.0V ON
4	ADJ	BRIGHTNESS CONTROL: 0V=MAX.
3,5	GND	POWER SUPPLY GROUND

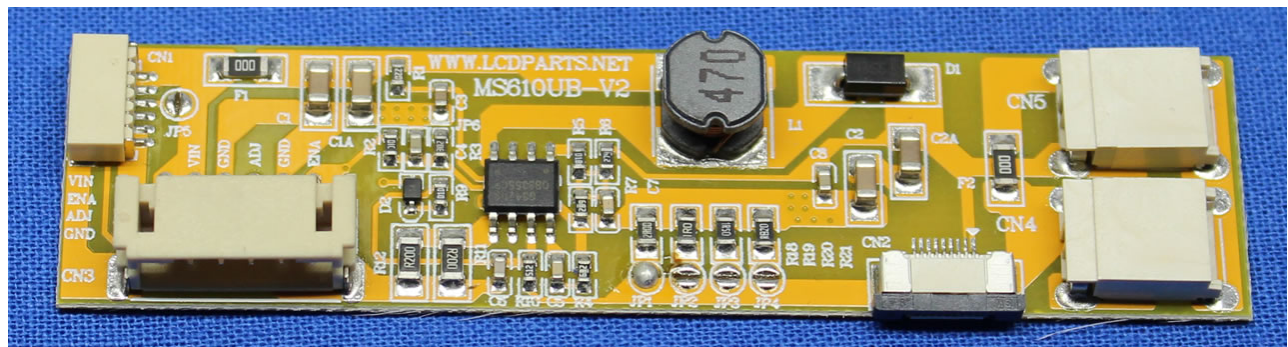
Output Pin Assignments:

CN2

PIN NO	SYMBOL	DESCRIPTION
1,2	VOUT	DC VOLTAGE OUTPUT
3,5	GND	LOW VOLTAGE RETURN

CN4 and CN5

PIN NO	SYMBOL	DESCRIPTION
1	VOUT	DC VOLTAGE OUTPUT
2	GND	LOW VOLTAGE RETURN



There two 6 pin connectors on MS610UB (CN1 and CN3). Their pin out is not the same (Printed on components side).

[MoniServ, Inc. | http://store.lcdparts.net/](http://store.lcdparts.net/) | <http://lcdparts.net/> | <https://lcdpart.com>

1600 Noriega Street | San Francisco | CA 94122 | 1-415-682-8685

SPECIFICATION:

[MoniServ, Inc. | http://store.lcdparts.net/](http://store.lcdparts.net/) | <http://lcdparts.net/> | <https://lcdpart.com>

1600 Noriega Street | San Francisco | CA 94122 | 1-415-682-8685

MS610UB-V2	Dimension: 80mm (3.15") X 20mm (0.79" X 6.60mm (0.26")
------------	--

CN1: Pin1/Pin2=VIN (+12V ~ 24V DC). P5/P6=GND (Power Ground). P4=ADJ (Brightness adjustment, N/C no connection), P3=ENA (On/Off).

CN3: Pin1/Pin2=VIN (+12V ~ 24V DC). P3/P5=GND (Power Ground). P4=ADJ (Brightness adjustment, N/C no connection), P6=ENA (On/Off).

You will find all these DC voltage from your existing inverter wire harness and apply to MS610UB

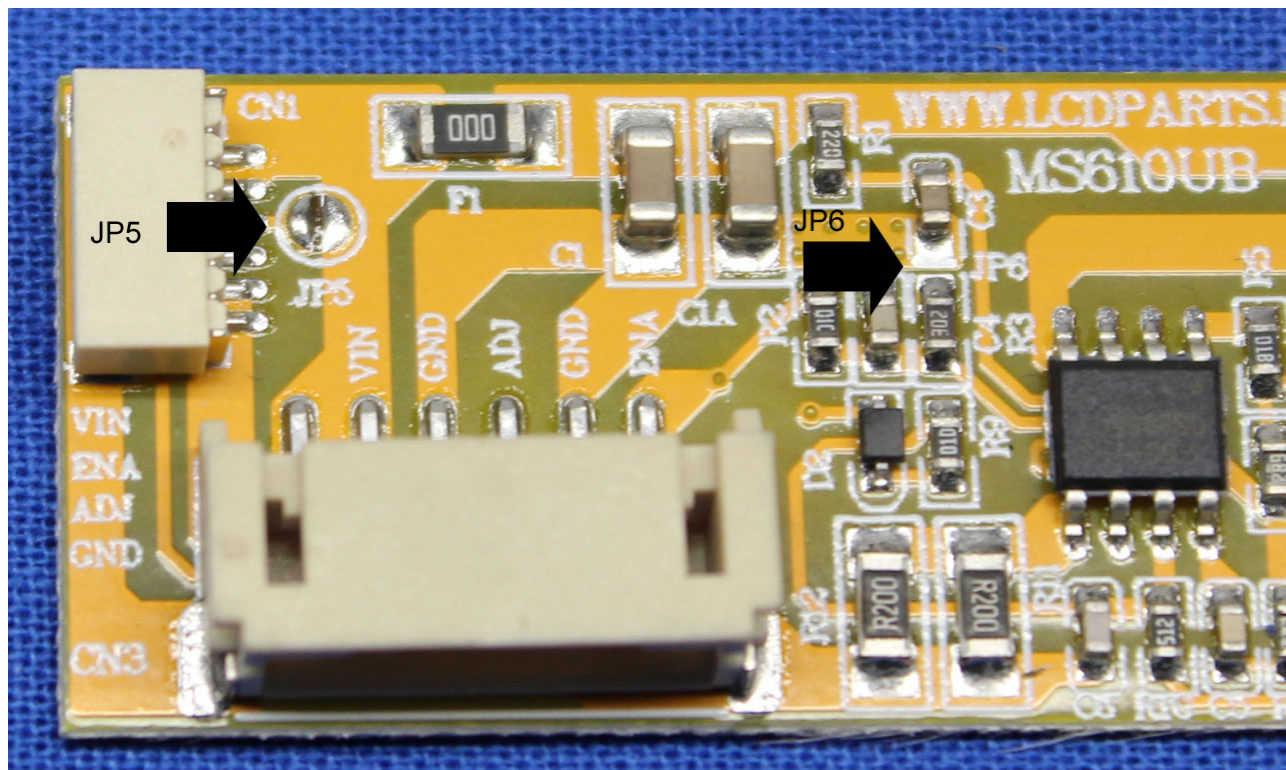
How to disable Enable

For +12V DC supply:

Just simply add solder on JP5. That is it!

For +24V DC supply:

Shorted JP5 and JP6



Note:

Our LED upgrade kits the ending DISENA, we had already shorted JP5 and JP6

[MoniServ, Inc. | http://store.lcdparts.net/](http://store.lcdparts.net/) | <http://lcdparts.net/> | <https://lcdpart.com>

1600 Noriega Street | San Francisco | CA 94122 | 1-415-682-8685