

MS610UB+DISENA

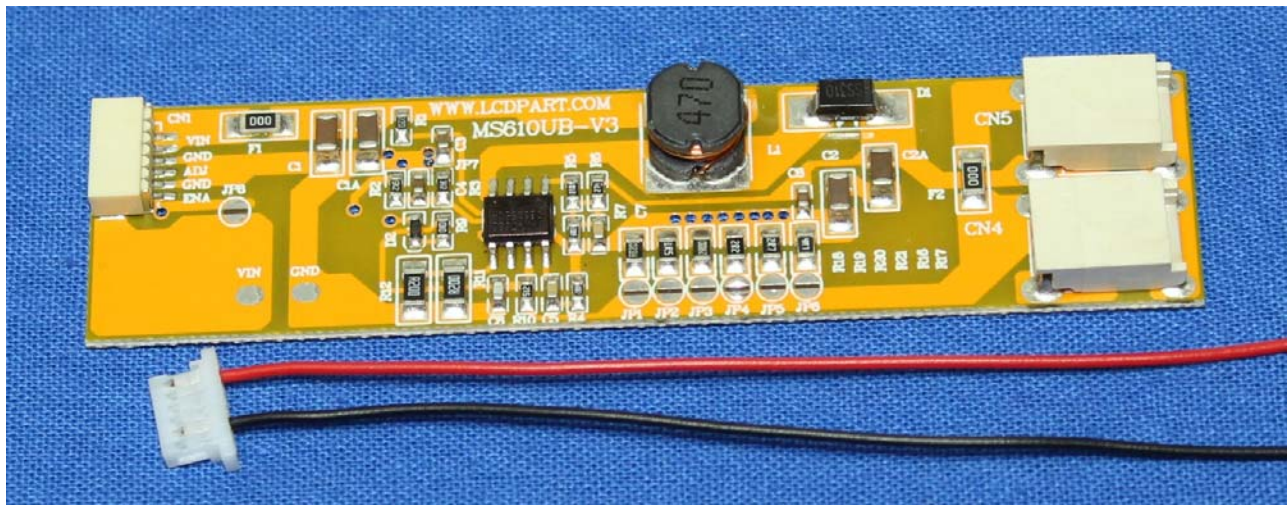
For Specification datasheet, please visit us online at
www.store.lcdparts.net/techsupport

MS610UB	Dimension: 80mm (3.15") X 20mm (0.79" X 6.60mm (0.26")
---------	--

MS610UB is designed for 12.1 inch or smaller LCD screens that space is limited. It is small and compact. It can be mounted anywhere on the back of the LCD screen. MS610UB is designed to drive LED strips up to 80V DC (10W).

How to Connect to MS610UB

- Connect 12V or 24V DC positive to Red wire
- Connect Ground Negative to Black wire
- Connect LED strip to CN4 or CN5
- Peel off double side tape on the bottom of MS610UB and mount it anywhere you want



Looking for technical assistance?
We love to help!

Please visit us online at
http://store.lcdparts.net/tech-support_ep_45.html

MoniServ, Inc

lcdpart.com | store.lcdparts.net | lcdparts.net
1600 Noriega Street | San Francisco | CA 94122 | 1-415-682-8685